



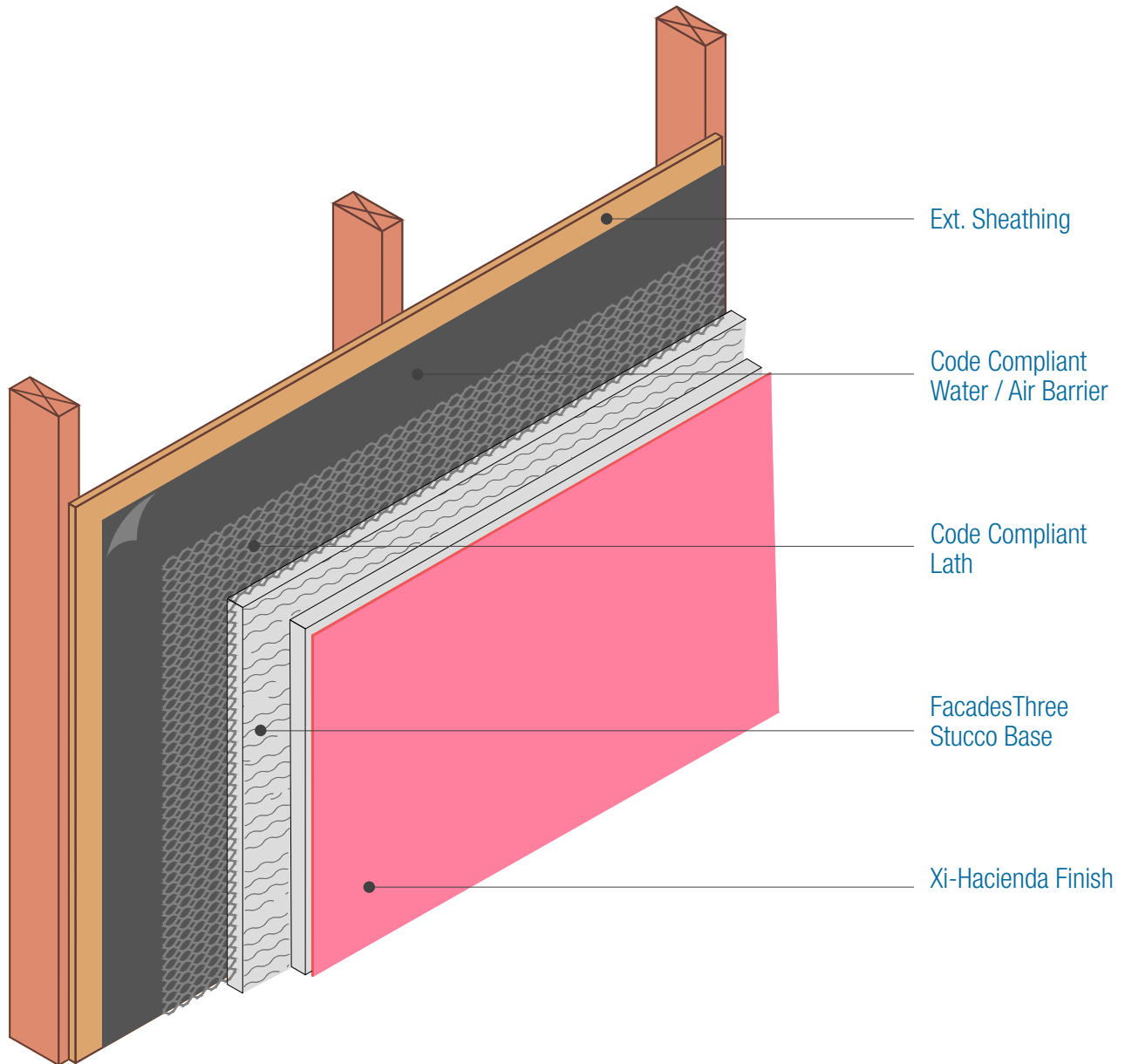
FacadesThree Hacienda Assembly Details



15262 Capital Port
San Antonio, TX 78249
1-800-611-6602
facadesxi.com

FacadesThree Hacienda Assembly Assembly Overview - Isometric

Date: 06-15-2021 | Detail: F3H.I.1 v1



NOTES:

1. See Specifications and Detail I.3 for material options.

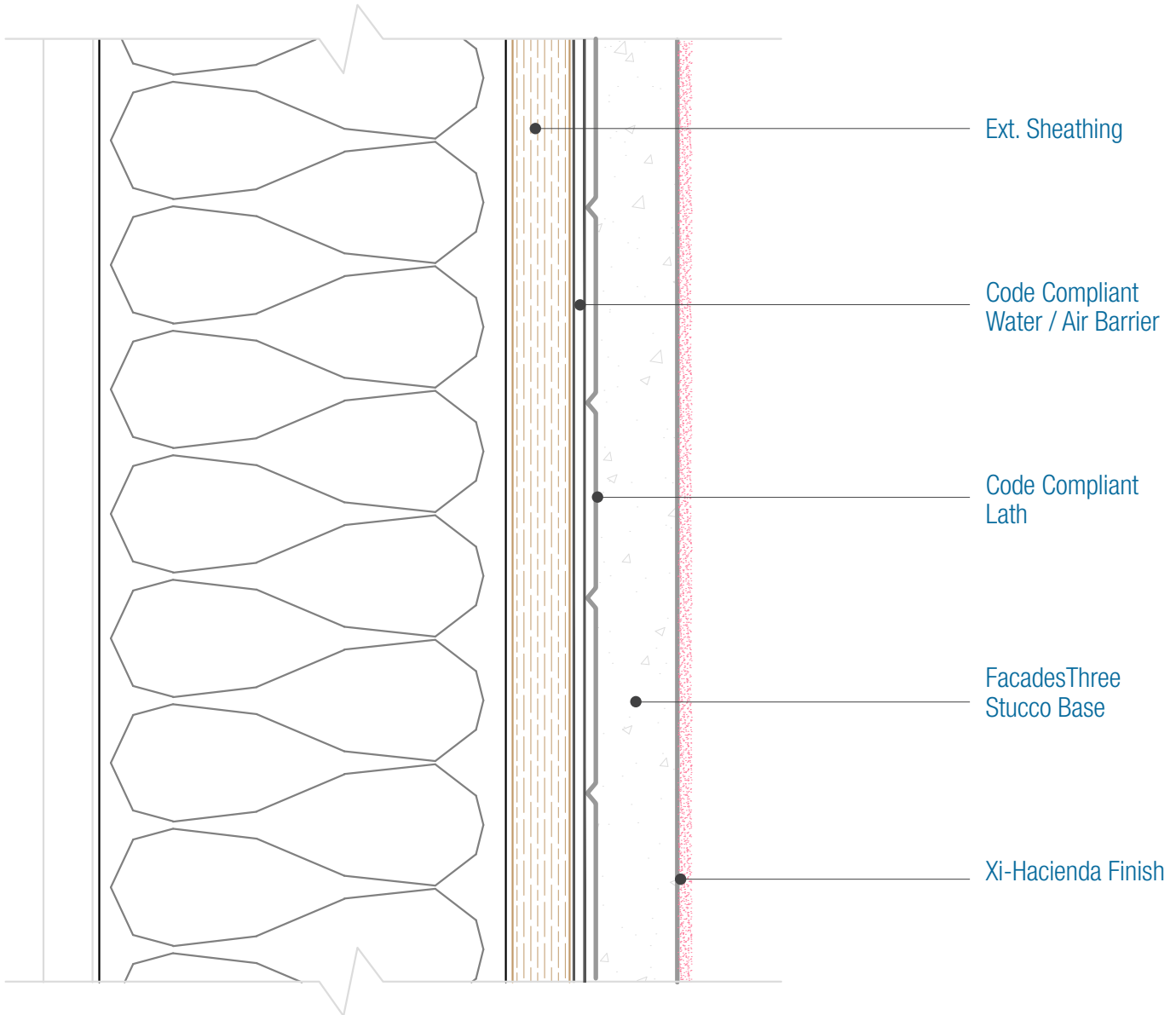
DISCLAIMER: FACADESXI details are recommendations that should be used for guidance only. There may be equivalent means of installation that are not shown in FACADESXI assembly details. All FACADESXI products shall be installed in accordance with FACADESXI product datasheets and all applicable building codes and industry standard practices. The design, engineering and final details incorporating any FACADESXI product are the sole responsibility of the project design professional. FACADESXI is not responsible for determining the acceptability and/or applicability of any FACADESXI product or detail for any specific project or condition. FACADESXI disclaims all liability for improper installation, workmanship, or design by a third-party. EXCEPT FOR ANY EXPRESS REPRESENTATIONS AND WARRANTIES BY FACADESXI, ALL IMPLIED WARRANTIES OF ANY KIND, INCLUDING BUT NOT LIMITED TO WARRANTIES OF MERCHANTABILITY OR FITNESS FOR A PARTICULAR PURPOSE OR COMPLIANCE WITH LAWS OR GOVERNMENT RULES OR REGULATIONS APPLICABLE TO THE PROJECT, ARE HEREBY DISCLAIMED. FACADESXI's website should always be consulted for the latest version of any details and/or product information. Contact FACADESXI for any technical assistance.



15262 Capital Port
San Antonio, TX 78249
1-800-611-6602
facadesxi.com

FacadesThree Hacienda Assembly Assembly Overview

Date. 06-15-2021 | Detail. F3H.I.3 v1



NOTES:

1. The specific Water Barrier and or Air Barrier required depends upon the substrate and the applicable Code year, See the specifications for those requirements.

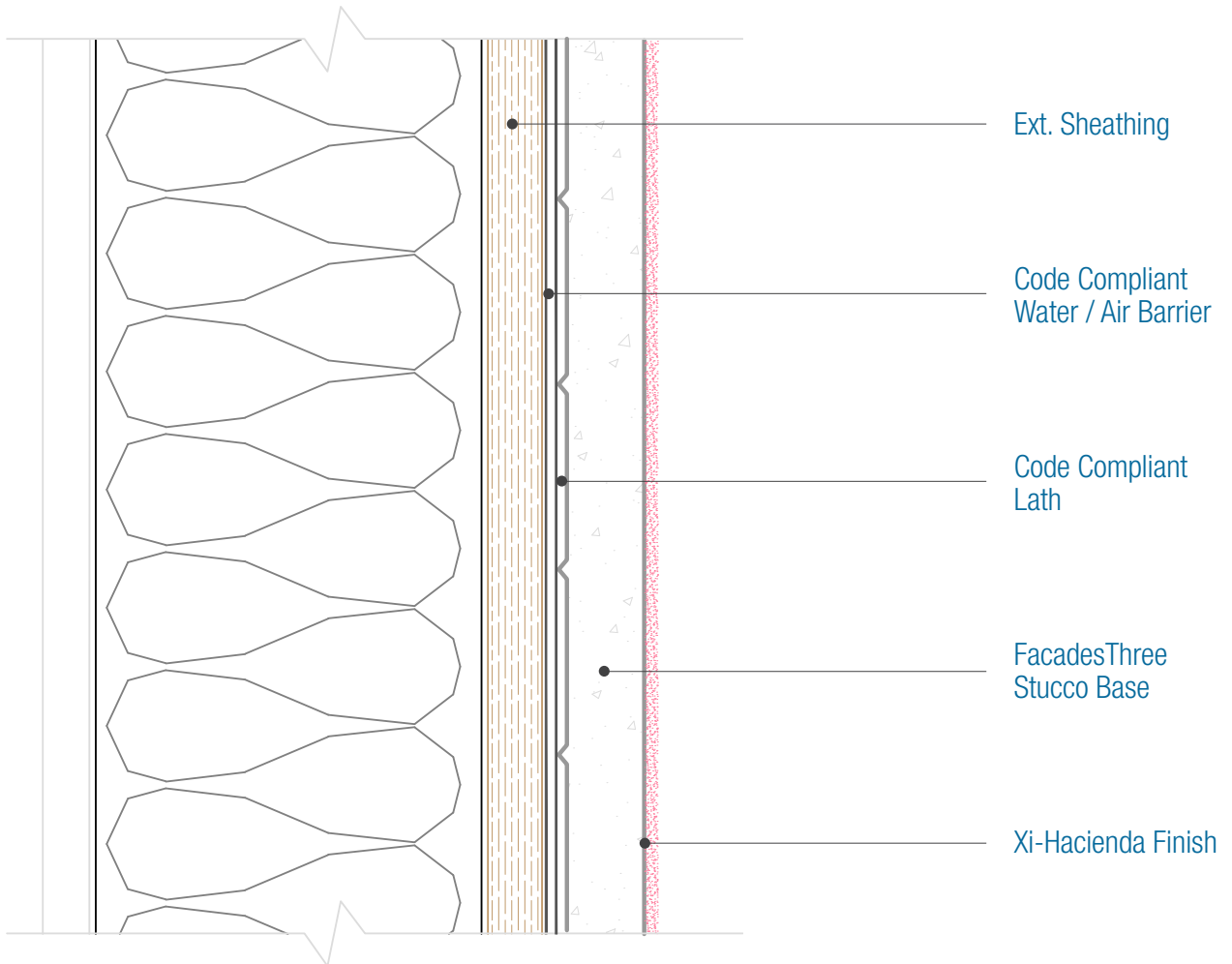
DISCLAIMER: FACADESXI details are recommendations that should be used for guidance only. There may be equivalent means of installation that are not shown in FACADESXI assembly details. All FACADESXI products shall be installed in accordance with FACADESXI product datasheets and all applicable building codes and industry standard practices. The design, engineering and final details incorporating any FACADESXI product are the sole responsibility of the project design professional. FACADESXI is not responsible for determining the acceptability and/or applicability of any FACADESXI product or detail for any specific project or condition. FACADESXI disclaims all liability for improper installation, workmanship, or design by a third-party. EXCEPT FOR ANY EXPRESS REPRESENTATIONS AND WARRANTIES BY FACADESXI, ALL IMPLIED WARRANTIES OF ANY KIND, INCLUDING BUT NOT LIMITED TO WARRANTIES OF MERCHANTABILITY OR FITNESS FOR A PARTICULAR PURPOSE OR COMPLIANCE WITH LAWS OR GOVERNMENT RULES OR REGULATIONS APPLICABLE TO THE PROJECT, ARE HEREBY DISCLAIMED. FACADESXI's website should always be consulted for the latest version of any details and/or product information. Contact FACADESXI for any technical assistance.



15262 Capital Port
 San Antonio, TX 78249
 1-800-611-6602
 facadesxi.com

FacadesThree Hacienda Assembly Assembly Components

Date: 06-15-2021 | Detail: F3H.I.3 v1



Framing

- Wood
- Metal

Water / Air Barrier

- Code compliant by other Mfr

FacadesThree Stucco Base

- FacadesThree Concentrate
- FacadesThree Sanded

Sheathing

- OSB
- Plywood
- Cement Board
- Fiberglassfaced
- Gypsum

Code Compliant Lath

- 2.5lb/yd² Expanded Metal Lath
- Woven Wire Lath
- Plastic Lath
- Per Specifications

Xi-Hacienda Finish

- Smooth
- Sand
- _____

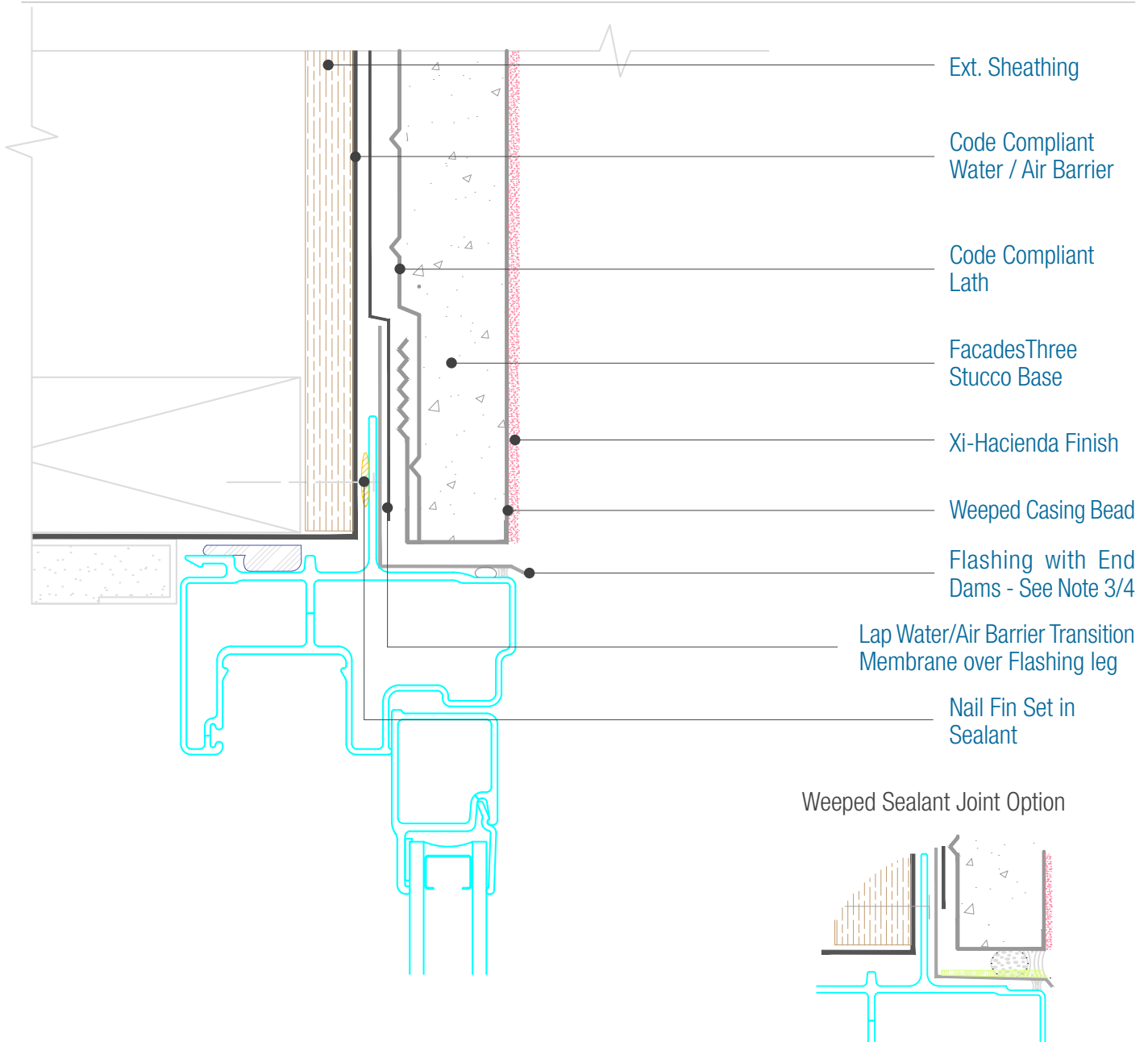
DISCLAIMER: FACADESXI details are recommendations that should be used for guidance only. There may be equivalent means of installation that are not shown in FACADESXI assembly details. All FACADESXI products shall be installed in accordance with FACADESXI product datasheets and all applicable building codes and industry standard practices. The design, engineering and final details incorporating any FACADESXI product are the sole responsibility of the project design professional. FACADESXI is not responsible for determining the acceptability and/or applicability of any FACADESXI product or detail for any specific project or condition. FACADESXI disclaims all liability for improper installation, workmanship, or design by a third-party. EXCEPT FOR ANY EXPRESS REPRESENTATIONS AND WARRANTIES BY FACADESXI, ALL IMPLIED WARRANTIES OF ANY KIND, INCLUDING BUT NOT LIMITED TO WARRANTIES OF MERCHANTABILITY OR FITNESS FOR A PARTICULAR PURPOSE OR COMPLIANCE WITH LAWS OR GOVERNMENT RULES OR REGULATIONS APPLICABLE TO THE PROJECT, ARE HEREBY DISCLAIMED. FACADESXI's website should always be consulted for the latest version of any details and/or product information. Contact FACADESXI for any technical assistance.



15262 Capital Port
San Antonio, TX 78249
1-800-611-6602
facadesxi.com

FacadesThree Hacienda Assembly Nail Fin Window Head

Date: 06-15-2021 | Detail: F3H.II.1 v1



NOTES:

1. Attach penetrations to structural member.
2. Provide Air Tight seals at all penetrations.
3. Responsibility of the flashing is not necessarily that of the plastering contractor and should be denoted in the contract documents.
4. Flashing must be installed with End Dams and be completely watertight

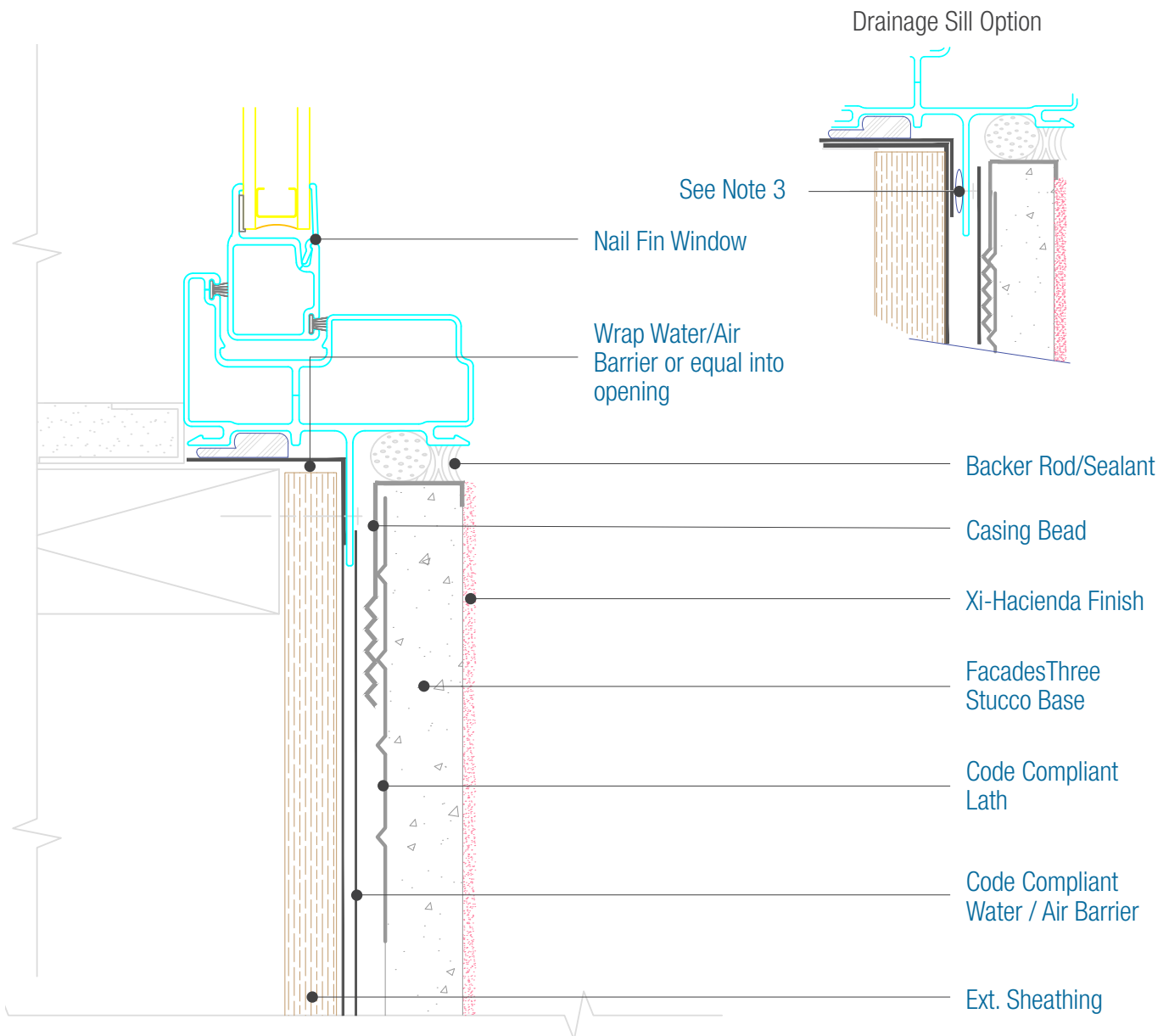
DISCLAIMER: FACADESXI details are recommendations that should be used for guidance only. There may be equivalent means of installation that are not shown in FACADESXI assembly details. All FACADESXI products shall be installed in accordance with FACADESXI product datasheets and all applicable building codes and industry standard practices. The design, engineering and final details incorporating any FACADESXI product are the sole responsibility of the project design professional. FACADESXI is not responsible for determining the acceptability and/or applicability of any FACADESXI product or detail for any specific project or condition. FACADESXI disclaims all liability for improper installation, workmanship, or design by a third-party. EXCEPT FOR ANY EXPRESS REPRESENTATIONS AND WARRANTIES BY FACADESXI, ALL IMPLIED WARRANTIES OF ANY KIND, INCLUDING BUT NOT LIMITED TO WARRANTIES OF MERCHANTABILITY OR FITNESS FOR A PARTICULAR PURPOSE OR COMPLIANCE WITH LAWS OR GOVERNMENT RULES OR REGULATIONS APPLICABLE TO THE PROJECT, ARE HEREBY DISCLAIMED. FACADESXI's website should always be consulted for the latest version of any details and/or product information. Contact FACADESXI for any technical assistance.



15262 Capital Port
 San Antonio, TX 78249
 1-800-611-6602
 facadesxi.com

FacadesThree Hacienda Assembly Nail-Fin Window Sill and Jamb

Date: 06-15-2021 | Detail: F3H.II.2 v1



NOTES:

1. There must be continuous airtightness over the entire building enclosure, where required by code. The actual project detail must show this continuity.
2. Provide Air Tight seals at all perimeter of window for an airtight seal.
3. For Rough Opening Protection and options see Water/Air Barrier Manufacturers installation instructions
4. At Sill, for a window that will drain behind the fin, spacers should be installed to accommodate drainage and not sealed, use Drainage Sill Option.

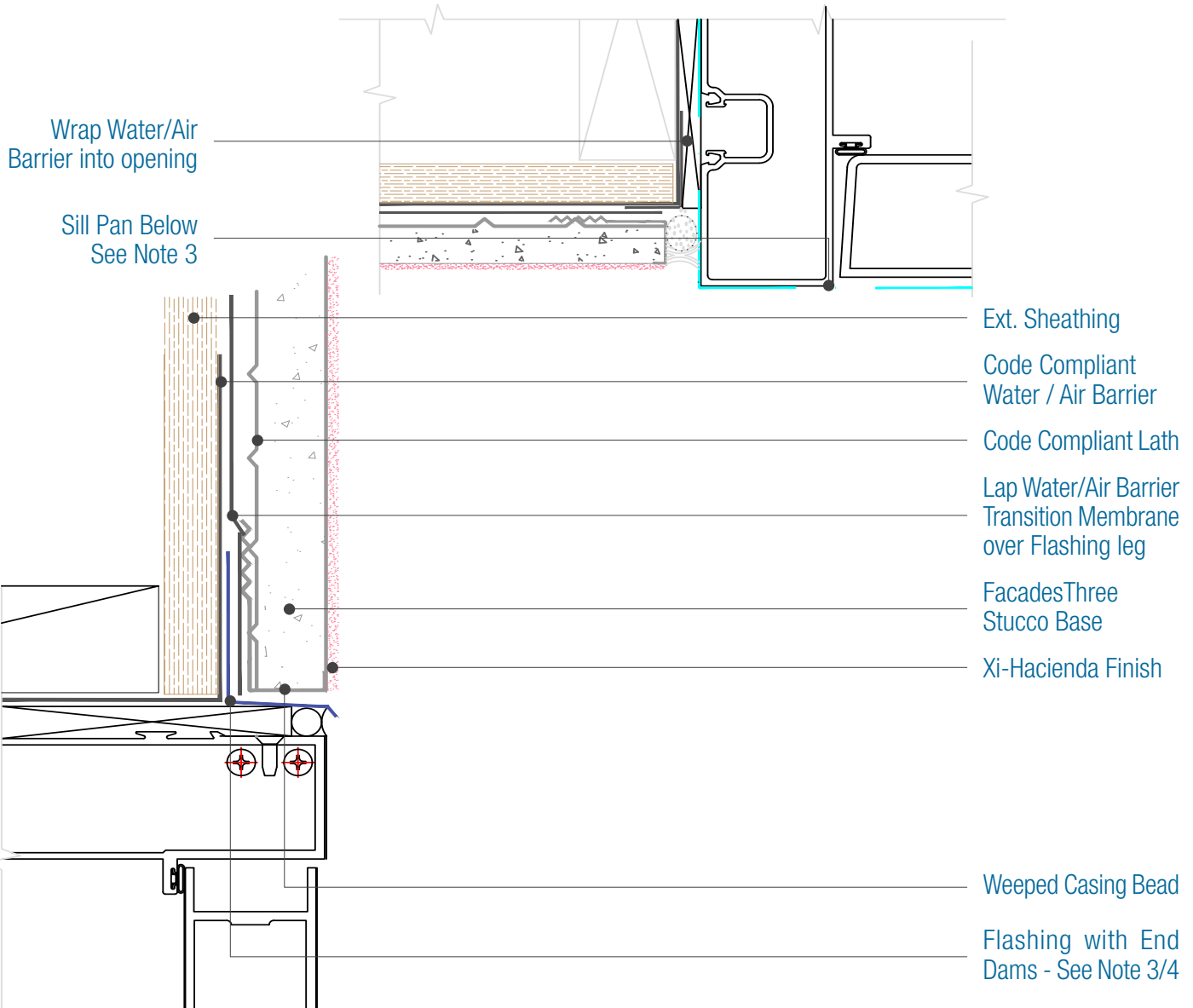
DISCLAIMER: FACADESXi details are recommendations that should be used for guidance only. There may be equivalent means of installation that are not shown in FACADESXi assembly details. All FACADESXi products shall be installed in accordance with FACADESXi product datasheets and all applicable building codes and industry standard practices. The design, engineering and final details incorporating any FACADESXi product are the sole responsibility of the project design professional. FACADESXi is not responsible for determining the acceptability and/or applicability of any FACADESXi product or detail for any specific project or condition. FACADESXi disclaims all liability for improper installation, workmanship, or design by a third-party. EXCEPT FOR ANY EXPRESS REPRESENTATIONS AND WARRANTIES BY FACADESXi, ALL IMPLIED WARRANTIES OF ANY KIND, INCLUDING BUT NOT LIMITED TO WARRANTIES OF MERCHANTABILITY OR FITNESS FOR A PARTICULAR PURPOSE OR COMPLIANCE WITH LAWS OR GOVERNMENT RULES OR REGULATIONS APPLICABLE TO THE PROJECT, ARE HEREBY DISCLAIMED. FACADESXi's website should always be consulted for the latest version of any details and/or product information. Contact FACADESXi for any technical assistance.



15262 Capital Port
San Antonio, TX 78249
1-800-611-6602
facadesxi.com

FacadesThree Hacienda Assembly Storefront Window Head and Jamb

Date. 06-15-2021 | Detail. F3H.II.3 v1



NOTES:

1. Provide Air Tight seals at all perimeter of opening for an airtight seal.
2. For Rough Opening Protection and options see Water/Air Barrier Manufacturers installation.
3. The Door must be set in a pan flashing and rough opening protection wrapped into that pan flashing.
4. Responsibility of the flashing is not necessarily that of the plastering contractor and should be denoted in the contract documents.
5. Flashing must be installed with End Dams and be completely watertight.

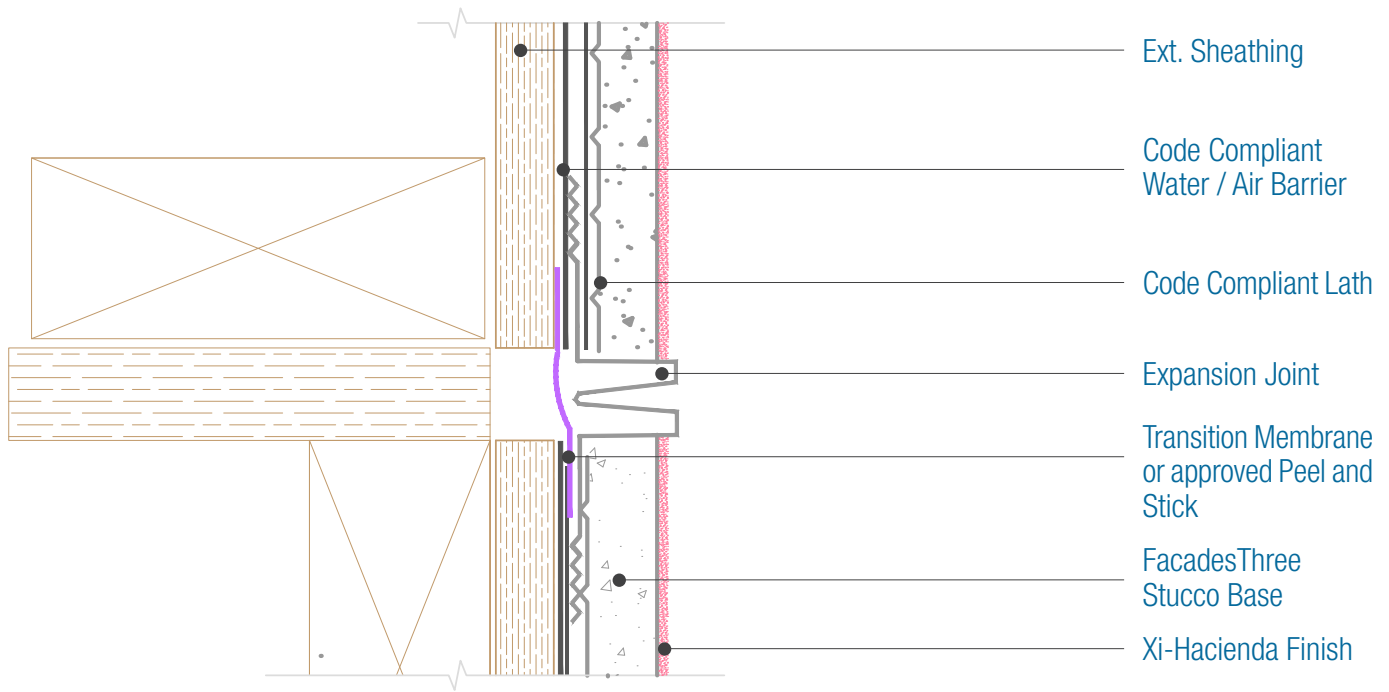
DISCLAIMER: FACADESXI details are recommendations that should be used for guidance only. There may be equivalent means of installation that are not shown in FACADESXI assembly details. All FACADESXI products shall be installed in accordance with FACADESXI product datasheets and all applicable building codes and industry standard practices. The design, engineering and final details incorporating any FACADESXI product are the sole responsibility of the project design professional. FACADESXI is not responsible for determining the acceptability and/or applicability of any FACADESXI product or detail for any specific project or condition. FACADESXI disclaims all liability for improper installation, workmanship, or design by a third-party. EXCEPT FOR ANY EXPRESS REPRESENTATIONS AND WARRANTIES BY FACADESXI, ALL IMPLIED WARRANTIES OF ANY KIND, INCLUDING BUT NOT LIMITED TO WARRANTIES OF MERCHANTABILITY OR FITNESS FOR A PARTICULAR PURPOSE OR COMPLIANCE WITH LAWS OR GOVERNMENT RULES OR REGULATIONS APPLICABLE TO THE PROJECT, ARE HEREBY DISCLAIMED. FACADESXI's website should always be consulted for the latest version of any details and/or product information. Contact FACADESXI for any technical assistance.



15262 Capital Port
 San Antonio, TX 78249
 1-800-611-6602
 facadesxi.com

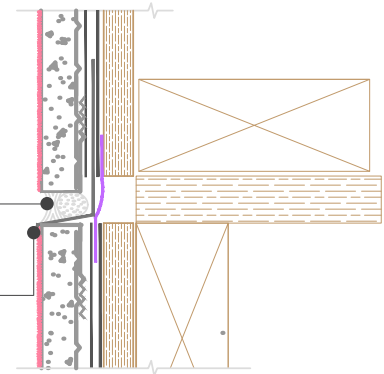
FacadesThree Hacienda Assembly Expansion Joint

Date: 06-15-2021 | Detail: F3H.III.1 v1



Flashed Expansion Joint Option

Backer Rod/Sealant
 with Weeps 16" oc
 Flashing with End
 Dams



NOTES:

1. There must be continuous airtightness over the entire building enclosure, where required by code. The actual project detail must show this continuity.
2. Attach penetrations to structural member.
3. Responsibility of the flashing is not necessarily that of the plastering contractor and should be denoted in the contract documents.
4. Flashing must be installed with End Dams and be completely watertight.

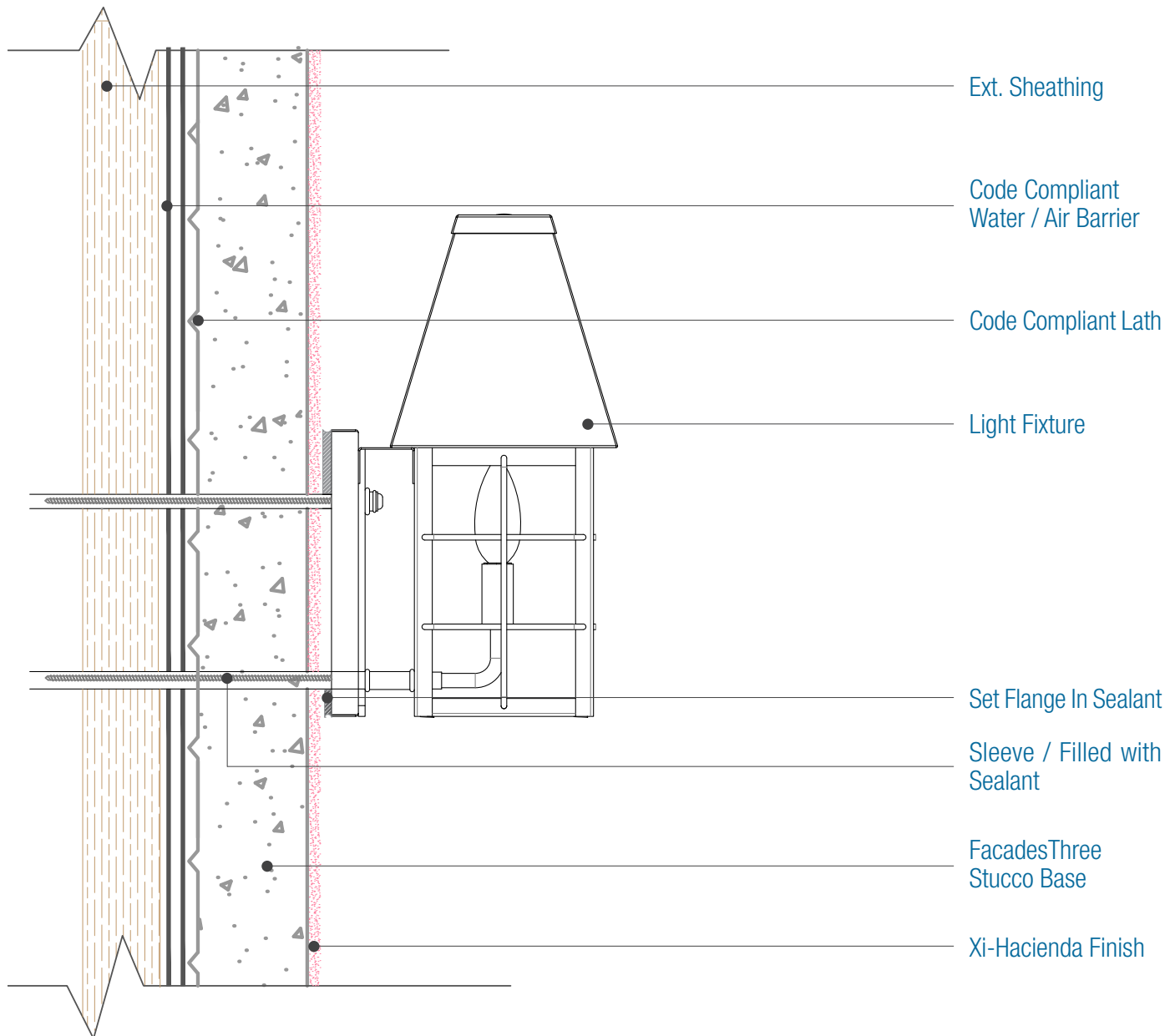
DISCLAIMER: FACADESXI details are recommendations that should be used for guidance only. There may be equivalent means of installation that are not shown in FACADESXI assembly details. All FACADESXI products shall be installed in accordance with FACADESXI product datasheets and all applicable building codes and industry standard practices. The design, engineering and final details incorporating any FACADESXI product are the sole responsibility of the project design professional. FACADESXI is not responsible for determining the acceptability and/or applicability of any FACADESXI product or detail for any specific project or condition. FACADESXI disclaims all liability for improper installation, workmanship, or design by a third-party. EXCEPT FOR ANY EXPRESS REPRESENTATIONS AND WARRANTIES BY FACADESXI, ALL IMPLIED WARRANTIES OF ANY KIND, INCLUDING BUT NOT LIMITED TO WARRANTIES OF MERCHANTABILITY OR FITNESS FOR A PARTICULAR PURPOSE OR COMPLIANCE WITH LAWS OR GOVERNMENT RULES OR REGULATIONS APPLICABLE TO THE PROJECT, ARE HEREBY DISCLAIMED. FACADESXI's website should always be consulted for the latest version of any details and/or product information. Contact FACADESXI for any technical assistance.



15262 Capital Port
San Antonio, TX 78249
1-800-611-6602
facadesxi.com

FacadesThree Hacienda Assembly Fixture Attachment

Date. 06-15-2021 | Detail. F3H.V.1 v1



NOTES:

1. The specific Water Barrier and or Air Barrier required depends upon the substrate and the applicable Code year, See the specifications for those requirements.
2. Pipe should be installed prior to the Cladding and the Water /air barrier transition membrane wrapped onto the pipe to create a water/air tight seal.
3. See Specification for Water/Air Barrier Transition Membrane Options.

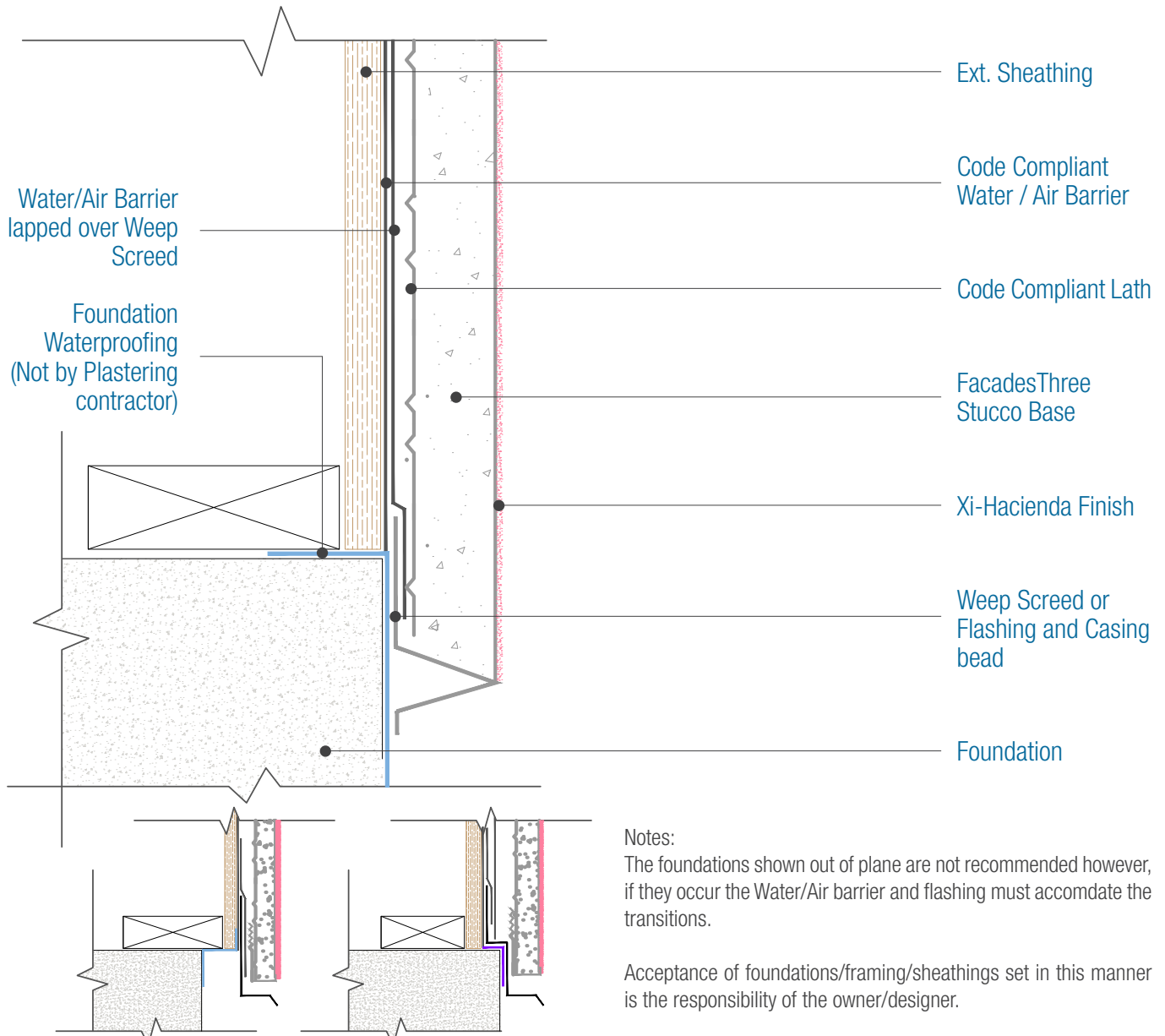
DISCLAIMER: FACADESXI details are recommendations that should be used for guidance only. There may be equivalent means of installation that are not shown in FACADESXI assembly details. All FACADESXI products shall be installed in accordance with FACADESXI product datasheets and all applicable building codes and industry standard practices. The design, engineering and final details incorporating any FACADESXI product are the sole responsibility of the project design professional. FACADESXI is not responsible for determining the acceptability and/or applicability of any FACADESXI product or detail for any specific project or condition. FACADESXI disclaims all liability for improper installation, workmanship, or design by a third-party. EXCEPT FOR ANY EXPRESS REPRESENTATIONS AND WARRANTIES BY FACADESXI, ALL IMPLIED WARRANTIES OF ANY KIND, INCLUDING BUT NOT LIMITED TO WARRANTIES OF MERCHANTABILITY OR FITNESS FOR A PARTICULAR PURPOSE OR COMPLIANCE WITH LAWS OR GOVERNMENT RULES OR REGULATIONS APPLICABLE TO THE PROJECT, ARE HEREBY DISCLAIMED. FACADESXI's website should always be consulted for the latest version of any details and/or product information. Contact FACADESXI for any technical assistance.



15262 Capital Port
San Antonio, TX 78249
1-800-611-6602
facadesxi.com

FacadesThree Hacienda Assembly Foundation

Date. 06-15-2021 | Detail. F3H.V.3 v1



NOTES:

1. See project specifications for approved water/air barrier transition membranes.
2. Drainage must be continuous either behind the accessory or into a weeped track.
3. Assembly Termination: Minimum 4" above earth, 2" above sidewalk.
4. Responsibility of the flashing is not necessarily that of the plastering contractor and should be denoted in the contract documents.

DISCLAIMER: FACADESXI details are recommendations that should be used for guidance only. There may be equivalent means of installation that are not shown in FACADESXI assembly details. All FACADESXI products shall be installed in accordance with FACADESXI product datasheets and all applicable building codes and industry standard practices. The design, engineering and final details incorporating any FACADESXI product are the sole responsibility of the project design professional. FACADESXI is not responsible for determining the acceptability and/or applicability of any FACADESXI product or detail for any specific project or condition. FACADESXI disclaims all liability for improper installation, workmanship, or design by a third-party. EXCEPT FOR ANY EXPRESS REPRESENTATIONS AND WARRANTIES BY FACADESXI, ALL IMPLIED WARRANTIES OF ANY KIND, INCLUDING BUT NOT LIMITED TO WARRANTIES OF MERCHANTABILITY OR FITNESS FOR A PARTICULAR PURPOSE OR COMPLIANCE WITH LAWS OR GOVERNMENT RULES OR REGULATIONS APPLICABLE TO THE PROJECT, ARE HEREBY DISCLAIMED. FACADESXI's website should always be consulted for the latest version of any details and/or product information. Contact FACADESXI for any technical assistance.

FACADESXi